

**LONDON BOROUGH OF BRENT**

**HIGHWAYS COMMITTEE**

**16<sup>th</sup> OCTOBER 2003**

REPORT NO : /03 FROM THE DIRECTOR OF ENVIRONMENT

FOR ACTION

NAME OF WARDS:  
Kensal Green

**WROTTESLEY ROAD, HARLESDEN - STREETS FOR PEOPLE SCHEME**

**1.0 SUMMARY**

1.1 This report informs members about progress with the development of the Wrotesley Road - Streets for People proposals and local safety scheme in Harlesden and reports the results of the recent public consultation and seeks approval to proceed to statutory consultation and implementation of the proposals.

**2.0 RECOMMENDATIONS**

2.1 That the Committee notes the scheme development work undertaken by officers.

2.2 That the Committee notes the results of the public consultations undertaken recently with local residents of the Wrotesley Road area and approves the elements of the scheme which are supported, as detailed in supplementary information to be provided at the meeting.

2.3 That the Committee authorises the Director of Transportation to proceed with any necessary statutory consultation, to consider any objections or representations and either to refer objections or comments back to this committee where he thinks appropriate, or to implement the orders for the schemes proposed in the report if there are no objections or representations, or he considers the objections or representations are groundless or insignificant.

**3.0 FINANCIAL IMPLICATIONS**

3.1 Funding has been allocated by Transport for London for a Street for People Scheme based on the Borough Spending Plan submission for 2003/2004. Funding of £150,000 for a Streets for People scheme with an additional £50,000 from the Local safety schemes programme in this location has been allocated within the Capital Programme for this financial year.

**4.0 STAFFING IMPLICATIONS**

4.1 The Council's Transportation Service Unit will deal with all issues related to the implementation of the schemes Schemes.

## **5.0 ENVIRONMENTAL IMPLICATIONS**

- 5.1. The introduction of traffic environmental measures will improve road safety for all road users, particularly cyclists and pedestrians, in the locations treated and reduce the impact of traffic and the frequency of road traffic accidents.
- 5.2 The improvements to the existing 7.5 tonne lorry ban in the area will help reduce the environmental impact of HGV through traffic which uses Wrotesley Road as a cut through.

## **6.0 LEGAL IMPLICATIONS**

- 6.1 These proposals would require the making of traffic regulation orders under the Road Traffic Regulation Act 1984, or a variation to existing schemes. The procedures to be adopted for making the actual orders or varying existing orders are set out in the associated Statutory Traffic Regulations.
- 6.2 Road hump measures are made under sections 90 A to F of the Highways Act 1980 and would require the Council to undertake prescribed consultation and consider objections and place statutory notices.
- 6.3 Members are authorising the Director of Transportation to consider and reject objections or representations if he thinks appropriate prior to him implementing the scheme following the statutory consultation process. This means a further report need not be brought before this committee prior to implementation.

## **7.0 DETAIL**

- 7.1 The Wrotesley Road – Streets for People scheme has been approved by Transport for London on the basis of the 2003/2004 Borough Spending Plan (BSP) submission which sets out the Borough's proposed programme of schemes and priorities. This scheme has been approved by the Mayor for London's office on the basis of this submission meeting the requirements of the Transport Strategy for London. A budget of £150,000 has been approved for the project including an additional £50,000 from the local safety scheme budget making a total of £200,000.
- 7.2 The introduction of Streets for People scheme will play an important role in achieving the Government's road safety strategy and casualty reduction targets set for 2010. This is the first scheme in Brent to be progressed under the Streets for People transport heading as detailed in the BSP to encourage, walking, and cycling and to improve the local environment.
- 7.3 The main aims of the Wrotesley Road Streets for People scheme are therefore to:
- Reduce vehicle speeds and make walking and cycling easier and safer within Wrotesley Road,
  - Make it easier for pedestrians to cross the road at key junctions,
  - Improve the safety of vulnerable road users such as children and the elderly,
  - Reduce the number of personal injury traffic accidents,
  - Reduce the environmental impact of through traffic particularly HGV traffic.

- 7.4 Scheme development work has been underway for the last 3 months and officers from the Transportation Service Unit have undertaken extensive consultations with local representatives, working closely with local members, residents and the Wrottesley Road Residents Association.
- 7.5 Wrottesley Road is a strategic part of the highway network in this area and is a local distributor road and also an essential route for the Emergency Services. As a result the type of speed control measures that would be supported by these authorities is limited because of the effect they could have on their statutory response times for emergency incidents. The use of traditional forms of traffic calming such as road humps along the entire length of Wrottesley Road therefore would not be supported. The Police, emergency services, transport operators and other statutory bodies have been consulted on the proposals through regular traffic liaison meetings and their comments have been taken into account within the design where possible.
- 7.6 A full public consultation exercise with local residents was undertaken in August - September 2003 over the initial scheme proposals. The proposals included two options for new traffic signals at the junction of Wrottesley Road / Furness Road. Option 1 involved removing the central island strip therefore opening up the junction to all movement and introducing new traffic signals to provide safe crossing facilities for pedestrians and cyclists. Option 2 retained the central island strip and also controlled the junction with traffic signals again to provide better facilities for pedestrians and cyclists. Both options also included speed cushions on the approach to the junction to reduce vehicle speeds. A new zebra crossing outside 115/117 Wrottesley Road was also proposed along with improvements to the central island of the roundabout at the All Souls Avenue junction, and introducing waiting restrictions at the corners of side road junctions and an enhancement of the existing lorry ban signing.
- 7.7 However during the consultation process concerns were raised by the Wrottesley Road Residents Association regarding the scheme and the options that were available. A subsequent site meeting took place with Officers, Local Councillors and representatives of the Wrottesley Road Residents Association to discuss the proposals. As a consequence of the meeting a public meeting and exhibition was arranged and held at St Marks Church Hall in All Souls Avenue in early September. Local residents and Councillors were invited to see revised plans of the proposals and discuss concerns regarding the scheme with engineers. Local resident's views were carefully considered following the meeting and the scheme was modified after further discussions with the Metropolitan Police. The revised scheme now includes four options at the junction of Wrottesley Road and Furness Road and additional improvements along the length of the road. Detailed plans of the proposal will be displayed at the Committee meeting.

- 7.8 A second public consultation with local residents directly affected by the new traffic calming measures proposed is now in progress and will be complete by the time of the Highways Committee meeting. Consultation leaflets and prepaid return questionnaires have been delivered by post to all premises within the areas affected and details of the results of the consultation will be reported verbally at the Committee. Appendix A gives details of the public consultation document distributed to residents in the Wrotesley Road area, which includes proposals of the revised scheme design and is self-explanatory. Approximately 2259 questionnaires were distributed to addresses in the area in accordance with the public consultation practice adopted by the Highways Committee recently.
- 7.9 It was agreed with local residents and ward councillors that the enhancement of the existing 7.5 tonne lorry ban signing would be implemented in advance of the main scheme.
- 7.10 In order to implement the scheme a traffic regulation order will need to be made and associated statutory consultation undertaken using powers contained in the Road Traffic Regulation Act 1984 in respect of implementing waiting restrictions. This process will take approximately 5-6 months to fully complete after which the scheme will be fully operational. The implementation of road hump features and pedestrian crossings will also require the advertising of statutory public notices using powers contained in the Highways Act 1980.
- 7.11 If Committee approve the scheme then any objections to the schemes received as a result of statutory consultations would be given full consideration by the Director of Transportation and reported back to members if he thinks appropriate, otherwise he will implement the scheme.

## **8.0 Details of Documents:**

Project Files TP 220,273

Any person wishing to inspect the above papers should contact Barry Philips, Traffic Team (Leader), Transportation Service Unit, Brent House, 349 High Road, Wembley, Middlesex HA9 6BZ,  
Telephone: 0208 937 5147

**Richard Saunders**  
**Director of Environment**

# Wrotesley Road, Harlesden - Streets for People Scheme APPENDIX A



## Traffic Management and Safety Scheme Wrotesley Road, Harlesden, NW10

PUBLIC  
CONSULTATION  
September / October 2003

### SCHEME RECONSULTATION

You may recall that Brent Council recently consulted you on proposals to improve road safety in Wrotesley Road. During the process a number of concerns were raised by local residents about the range of choices in the questionnaire. As a result further investigations have been undertaken and additional options developed. In light of those comments this new consultation leaflet has been sent to you. We would appreciate your views on the revised range of options proposed.

The revised proposals will help to improve access for both motorists and vulnerable road users such as pedestrians and cyclists. There have been a total of 15 accidents including 2 serious and 13 minor casualties between January 2000 and December 2002.



### **NEW PROPOSALS**

Having analysed the data and considered the problems the Transportation Unit has developed the following proposals which are intended to reduce vehicle speeds and enhance road safety for pedestrians and cyclists:

- Improving Wrotesley Road / Furness Road junction. (Four Options available)
- Introducing a raised zebra crossing outside the surgery in the vicinity of the junction with Wrotesley Road / All Souls' Avenue.
- Introducing a mini roundabout at the junction of Wrotesley Road / Harlesden Road.

- Introducing a raised zebra crossing in the vicinity of the proposed mini roundabout at the junction of Wrotesley Road / Harlesden Road.
- Introducing new waiting restrictions at the side road junctions with Wrotesley Road to improve visibility and road safety.



### **CONSULTATION**

A plan of the scheme is attached. Your views on the various proposals are requested and a number of questions are set out in the attached questionnaire. I would be grateful if you could take the time to fill in the form and return it to us before :

**Monday 13<sup>th</sup> October 2003**

Using the pre-paid postage provided. If you need to discuss the scheme further, please do not hesitate to contact the Traffic Management Team on 020 8937 5185.


### **YOUR VIEWS ARE IMPORTANT TO US**

We need your views on the proposals. This will help the Transportation Service Unit to finalise the design.

**David Eaglesham**  
Head of Traffic Management

Environmental Services, Transportation Services Unit, Traffic Management Section  
Brent House, 349-357 High Road, Wembley, Middx, HA9 6BZ (Tel: 020 8937 5185; Fax: 020 8937 5129)

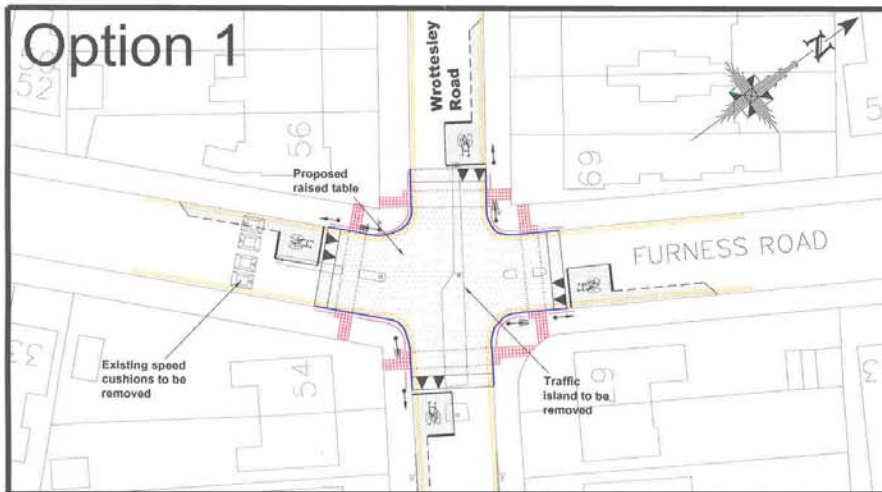
**Wrotesley Road, Harlesden - Streets for People Scheme  
APPENDIX A (continued)**

	<p><b>Traffic Management and Safety Scheme Wrotesley Road, Harlesden, NW10</b></p>	<p><i>PUBLIC CONSULTATION September / October 2003</i></p>
<b>QUESTIONNAIRE</b>		
<p>Please check the address overleaf is yours and complete and return the questionnaire to Brent Council by <b>Monday 13<sup>th</sup> October 2003</b> using the pre-paid postage provided on the reverse side of this form.</p>		
<p>1. Do you support the proposed traffic management and road safety scheme along Wrotesley Road?</p> <p>2. Are you in favour of the introduction of a raised zebra crossing outside the surgery in Wrotesley Road near its junction with All Souls Avenue?</p> <p>3. Are you in favour of improving the junction of Wrotesley Road with Furness Road to assist pedestrians and cyclists?</p> <p>4. Which of the four options is your preferred choice?</p> <p style="margin-left: 20px;"> <b>Option 1</b> <input type="checkbox"/>                <b>Option 2</b> <input type="checkbox"/>                <b>Option 3</b> <input type="checkbox"/>                <b>Option 4</b> <input type="checkbox"/>                <b>None</b> <input type="checkbox"/> </p> <p>5. Are you in favour of the introduction of a mini roundabout at the junction of Wrotesley Road / Harlesden Road to improve road safety?</p> <p>6. Are you in favour of the introduction of a raised zebra crossing in Wrotesley Road near its junction with Harlesden Road?</p> <p>7. Are in favour of the introduction of waiting restrictions (double yellow lines) at the side road junctions with Wrotesley Road to improve visibility?</p>	<p><b>YES</b> <input type="checkbox"/>    <b>NO</b> <input type="checkbox"/></p> <p><b>YES</b> <input type="checkbox"/>    <b>NO</b> <input type="checkbox"/></p> <p><b>YES</b> <input type="checkbox"/>    <b>NO</b> <input type="checkbox"/></p> <p><b>YES</b> <input type="checkbox"/>    <b>NO</b> <input type="checkbox"/></p> <p><b>YES</b> <input type="checkbox"/>    <b>NO</b> <input type="checkbox"/></p> <p><b>YES</b> <input type="checkbox"/>    <b>NO</b> <input type="checkbox"/></p> <p><b>YES</b> <input type="checkbox"/>    <b>NO</b> <input type="checkbox"/></p>	
<p><b>COMMENTS</b></p> <p><i>Do you have any comments about the proposals? Please be brief and write clearly</i></p> <p>.....</p> <p>.....</p> <p>.....</p> <p>.....</p> <p>.....</p> <p>.....</p> <p>.....</p> <p>.....</p> <p>.....</p> <p>.....</p>		

**Wrotesley Road, Harlesden - Streets for People Scheme  
APPENDIX A (continued)**

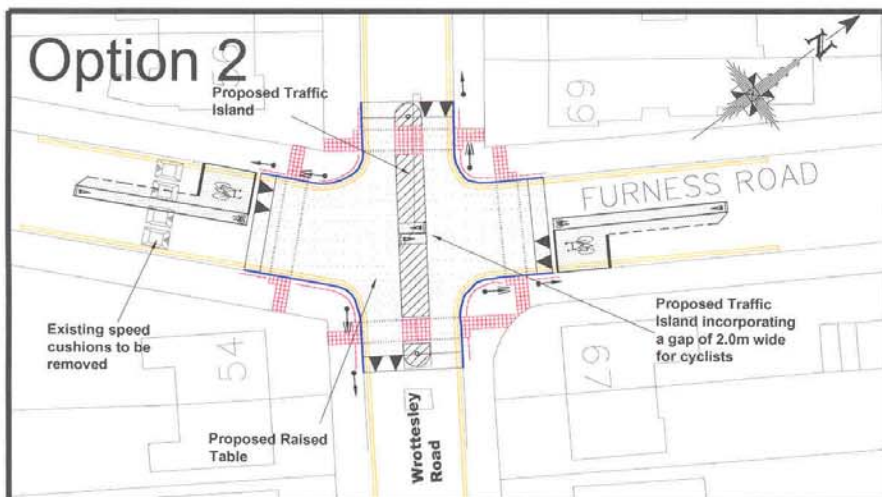
**Traffic Management and Safety Scheme  
Wrotesley Road, Harlesden, NW10**

**Improvements to Wrotesley Rd/Furness Rd Junctions**



The main measures of this option are:

- The removal of the existing central median traffic island.
- The construction of a raised speed table at the junction.
- The introduction of traffic signals on all arms to improve pedestrian and cycle crossing facilities.



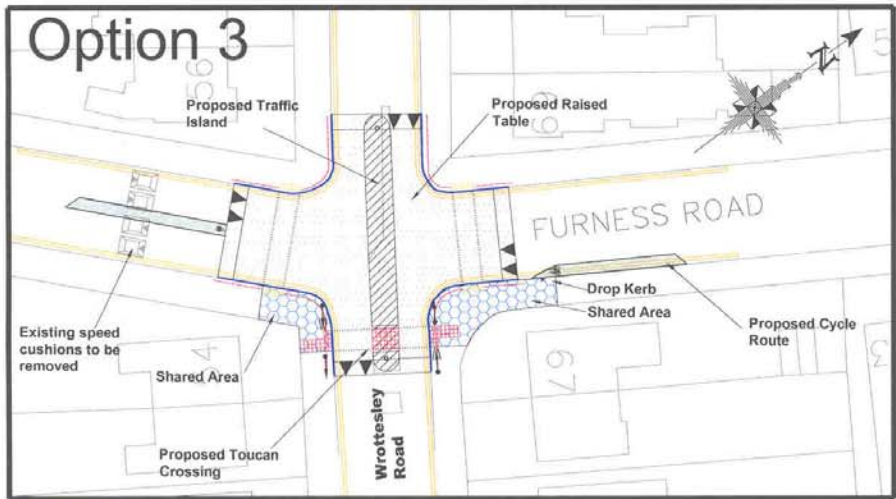
The main measures of this option are:

- The central island will remain and the trief kerb with be replaced by a lower kerb face along the central median traffic island.
- The construction of a raised speed table at the junction.
- The construction of a 2m wide gap along the central median traffic island for cyclists.
- The introduction of traffic signals on all arms.

**Wrotesley Road, Harlesden - Streets for People Scheme**  
**APPENDIX A (continued)**

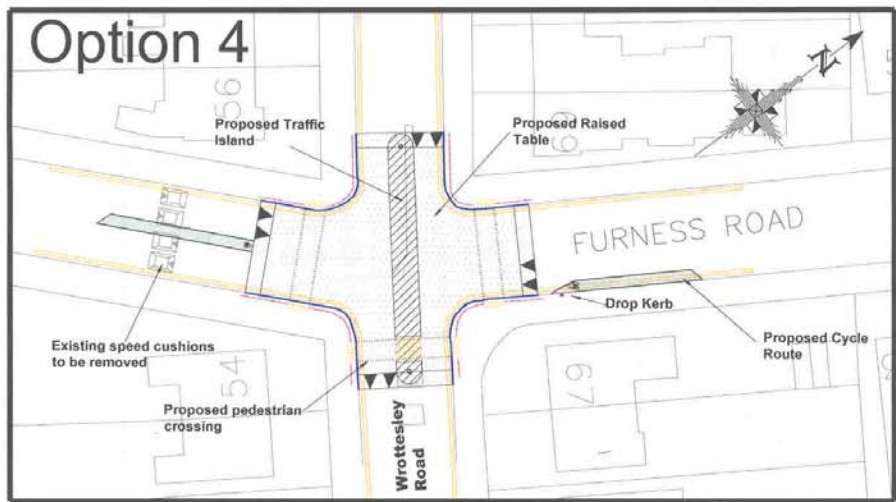
**Traffic Management and Safety Scheme**  
**Wrotesley Road, Harlesden, NW10**

**Improvements to Wrotesley Rd/Furness Rd Junctions**



The main measures of this option are:

- The central island will remain and the trief kerb will be replaced by a lower kerb face along the central median traffic island.
- The construction of a raised speed table at the junction.
- The introduction of a Toucan Crossing (Crossing which allows cyclists and pedestrians to cross) on the North Westerly approach to the junction.



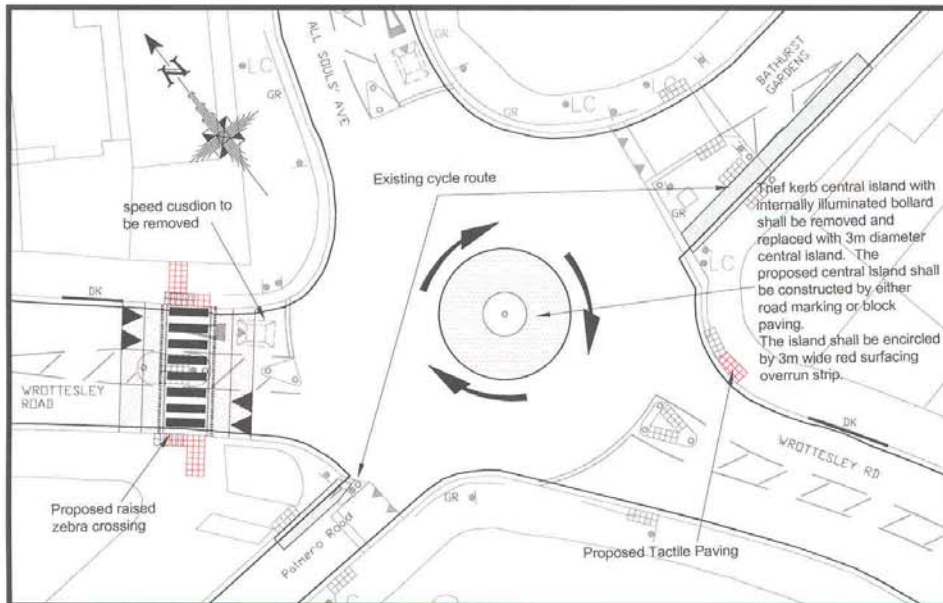
The main measures of this option are:

- The central island will remain and the trief kerb will eb replaced by a lower kerb face along the central median traffic island.
- The construction of a raised speed table at the junction.
- No traffic lights are proposed at this junction.

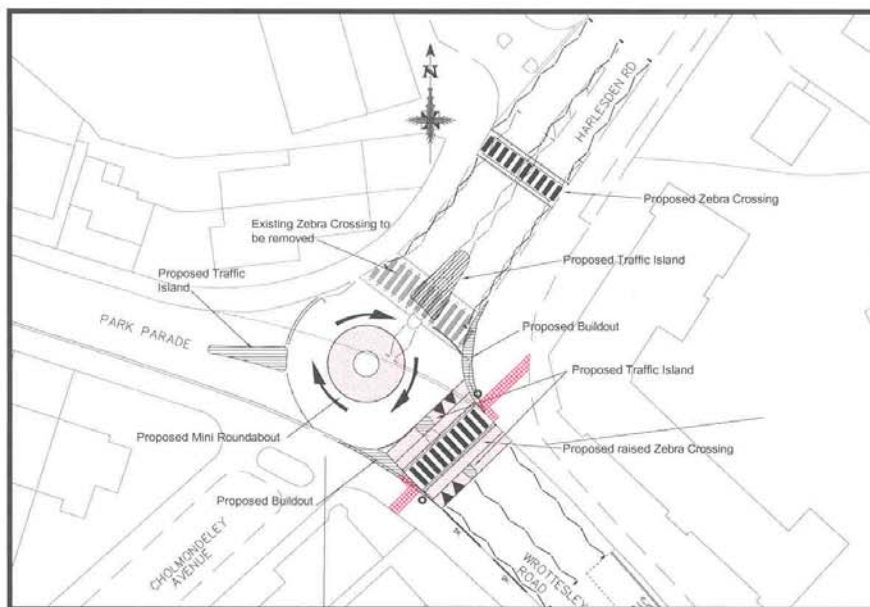


**Wrotesley Road, Harlesden - Streets for People Scheme  
APPENDIX A (continued)**

**Traffic Management and Safety Scheme  
Wrotesley Road, Harlesden, NW10**



Improvements to Wrotesley Rd/All Souls' Ave/Bathurst Grdns/  
Palmero Rd Junction



Improvements to Wrotesley RD/Park Parade/Harlesden Rd Junction